



Freeborn
Mower
Electric
Cooperative

People. Power. Possibilities.

county lines

NEWSLETTER

NOVEMBER 2022 • VOLUME 83 • NO. 11



With Gratitude and Thankfulness

During November we are reminded not only that we have much for which to be thankful, but also that there are many who have sacrificed for our freedom, way of life, and success.

We thank all of America's veterans and those currently in military service. Employees with military backgrounds bring with them important skill sets. They know how to be successful in high-pressure situations and possess a strong work ethic. #516302 Veterans are an important component of the workforce across our local communities and at Freeborn Mower Electric Cooperative.

Thanksgiving brings a time to pause and reflect. We extend sincere thanks to:

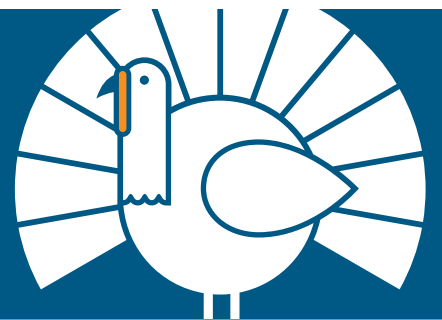
OUR MEMBER-OWNERS for your participation and support of this cooperative. The cooperative's sole reason for existence is to serve our members with respect, competency, and attentiveness while meeting their electricity needs in a reliable and safe manner.

OUR EMPLOYEES, each of whom plays a part in providing our members with the service experience they deserve.

OUR BOARD OF DIRECTORS for their leadership and thoughtful consideration in planning and setting policies for the cooperative.

OUR INDUSTRY PARTNERS: Cooperative Response Center (CRC), Heartland Security, Touchstone Energy, Dairyland Power Cooperative, Minnesota Rural Electric Association (MREA), and National Rural Electric Cooperative Association (NRECA).

HAPPY
THANKS
GIVING



ceo message

Jim Krueger, President & CEO



MANAGING THE FLUCTUATING COSTS TO PURCHASE WHOLESALE POWER

During the past few months, we've examined many concerns — supply chain issues, rising costs, a comprehensive cost of service study, and the use of a power cost adjustment (PCA). As a member-owned utility, it's vital that we speak honestly and openly about these things. I'm sorry to announce that the news is not good. Rate increases will be coming, as is apparent by the need for a significant PCA this month.

Throughout the year, we have been making adjustments to cover rising costs on nearly everything we purchase. The PCA however, is directly linked to the increased cost of wholesale power. The PCA is a pass-through of the increased cost of wholesale power to FMEC. The money recouped does not pay for anything else locally at our cooperative. The current PCA charge is the result of multiple factors in July and August 2022, including high energy prices in the market, delayed coal deliveries, and higher-than-budgeted fuel costs.

We know this is grim news. Times are tough as the cost of gasoline, groceries, and other essential needs

continue to rise. All of us here at FMEC are living this reality, too. We've worked hard to keep internal costs down, but we can't control rising fuel costs in the generation of electricity. #1894700 The cost of wholesale electricity accounts for about 73% of FMEC's annual expenses.

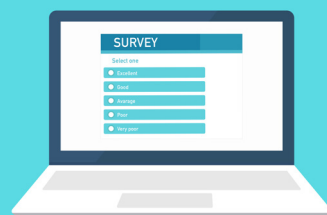
While we strive for rate stability, it has become impossible in today's energy environment. Expenses must be recovered to protect the financial stability and reliability of the cooperative, along with operating safely.

“The PCA is a pass-through of the increased cost of wholesale power to FMEC. The money recouped does not pay for anything else locally at our cooperative.”



YOUR VOTE MATTERS

**REMEMBER TO VOTE
NOVEMBER 8, 2022**



**THANK
YOU FOR
SHARING!**

Thank you for participating in our member survey. We are grateful that more than 2,000 members shared their thoughts to help us serve you better! Results will be shared with members in our December newsletter.

member news

OFFICE CLOSED

Our office will be closed on Thursday, November 24, and Friday, November 25 to allow our employees time with their families.

NOTICE OF INTERCONNECTION CO-GENERATORS AND SMALL POWER PRODUCERS

In accordance with the adopted Cooperative Rules implementing 216.B.164, Freeborn Mower Electric Cooperative (FMEC) is obligated to interconnect with and purchase electricity from co-generators and small power producers which satisfy the conditions and become a qualifying facility.

FMEC is obligated to provide information free of charge to all interested members upon request regarding rates and interconnection requirements. The current interconnection documents can be found on the cooperative's website. Click on Energy Services and then Renewables. Proceed by using the NOVA Power Portal.

All interconnections require an application and approval to become a qualifying facility. Any disputes over interconnection, sales, and purchases are subject to resolution by the cooperative.

For further information contact our office.

2022 LEGISLATIVE UPDATE

Your FMEC Board of Directors held its annual Legislative Update meeting with area lawmakers on September 27th at the cooperative. This important session allowed a frank discussion about the role and goals of FMEC in a rapidly changing economic and energy environment.

Participating was Senator Gene Dornink (Senate District 27), Representative Peggy Bennett (District 27A), and Representative Patricia Mueller (District 27B). Representing wholesale power supplier Dairyland Power Cooperative was Jennifer Shilling, Government Relations Manager. Mike Bull, Director of Policy & Regulatory Affairs at Minnesota Rural Electric Association, provided an energy status for Minnesota's electric cooperatives. In addition to our full FMEC Board, President & CEO Jim Krueger, and the FMEC Leadership Team were part of the discussions.

“I have appreciated my past seven years of learning about energy and approaching topics in a responsible manner that does not jeopardize safety,” explained Rep. Peggy Bennett. #95401 Since energy as an umbrella issue has so many facets, keeping open communication lines with those in government is vital to FMEC meeting its mission. Rep. Patricia Mueller added, “I listen to the people with boots on the ground and am available when issues arise.”

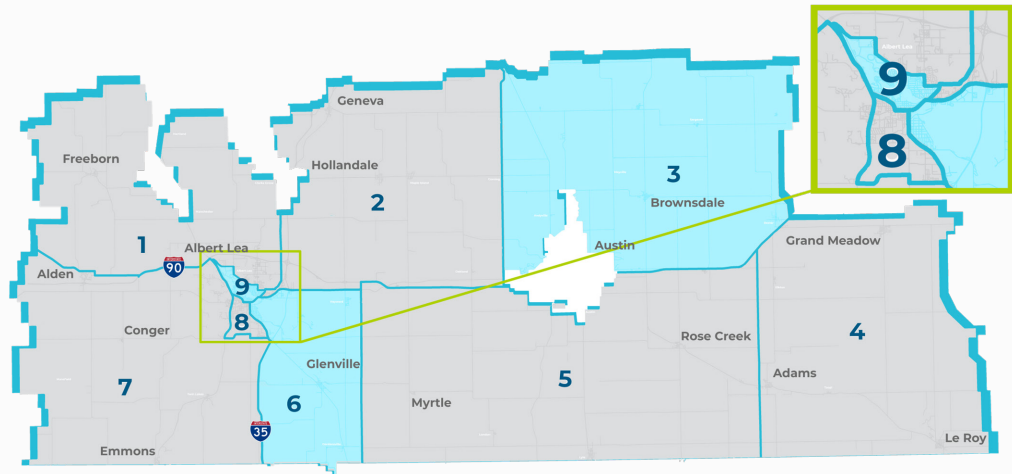
Concerning the state and nation's electric generation mix, Senator Gene Dornink stated that he was “interested in the direction nuclear power will take,” adding that he is hopeful that more discussion will continue.

“FMEC plays a vital role in the communities we serve. Ensuring a reliable and safe supply of electricity is of utmost importance. As a member-owned and member-governed utility, we are well situated to bring important energy-related issues before lawmakers. We thank these lawmakers and industry representatives for the fruitful discussion and exchange of perspectives on issues of importance to FMEC and our members.” — Jim Krueger



(l-r) Mike Bull (MREA); Richard Schaufler – District 4; Jim Krueger (FMEC); Jack Korman – District 7; Rep. Peggy Bennett – District 23A; Jay Neitzell – District 2; Senator Gene Dornink – District 23; William Trygstad – District 8; Representative Patricia Mueller – District 23B; Larry Irvine – District 9; Frank Fryer – District 5; Steve Garbisch – District 3; Joe Pacovsky – District 6; Dennis Anderson – District 1; Mary Nelson (FMEC). Not pictured: Jennifer Shilling (DPC) who attended virtually.

THREE DISTRICTS TO HOLD DIRECTOR ELECTIONS



Freeborn Mower Electric Cooperative is governed by a nine-person board of directors. The directors are elected by their fellow FMEC members residing in the district. Elections are held in three districts each year, with each director elected to serve a three-year term.

Applications are now being accepted for the position of Director in the following districts:

- DISTRICT 3:** Represents areas northwest of Austin, Sargeant, Brownsdale, Nicolville, and Dexter.
- DISTRICT 6:** Represents Hayward, Glenville, and areas west of Gordonsville.
- DISTRICT 9:** Represents the northern part of the city of Albert Lea.

Applicants must meet all eligibility requirements as specified in the Cooperative’s Bylaws. #95401 Among the qualifications and responsibilities outlined in the Bylaws, nominees must be:

1. a current member receiving electric service at their primary residence, and
2. the primary residence must be in the district in which the director is elected.

No person shall be eligible to become or remain a director of the Cooperative who:

1. is not a natural person and a member of the Cooperative, receiving service at the member’s primary residence in the district from which the director is elected;

2. within five (5) years preceding a director candidate’s nomination was or during service on the Board of Directors is finally adjudged to be guilty of a felony;
3. within three (3) years preceding a director candidate’s nomination was an employee of the Cooperative;
4. is an employee of the Cooperative or a grandparent, parent, spouse, co-habitant, child, or grandchild of an employee of the Cooperative;
5. is a person that is a grandparent, parent, spouse, co-habitant, child, or grandchild of an incumbent director whose district seat is not up for re-election at that time;
6. is in any way employed by or substantially financially interested in an enterprise competing with the Cooperative or any Cooperative-affiliated business;
7. is or becomes the full-time employee or agent of, or who is or becomes the full-time employer or principal of, another director;
8. is engaged in conduct that is a violation of law or violation of a Cooperative policy or policies, or whenever a director has materially failed to satisfy his/her duties as a director, including the duty to regularly attend meetings of the board of directors; or is employed by, materially affiliated with, or has a financial interest in, any individual or entity possessing a material or substantial conflict of interest with the Cooperative or a Cooperative subsidiary.

Contact our office for a Director Application Packet. Applications will be accepted until 3:30 p.m. on January 4, 2023.

MEMBER GOVERNANCE

Freeborn Mower Electric Cooperative is owned and controlled by the members using its services. This core principle sets us apart from other forms of utilities. Additionally, we operate on a not-for-profit basis through our Capital Credit retirement (return) of margins. Because we are so close to the members and their communities, we take pride in being both accountable and accessible. Any member who meets the Bylaw Qualifications and has a desire to become a Director of Freeborn Mower Electric Cooperative may apply for an open board position. This includes minorities, women, and individuals with a disability. Nominations are now open for members of District 3, District 6, and District 9. If you are unsure of the District in which you reside, see your monthly billing statement or call our office.

RESPONSIBILITIES OF DIRECTORS

While representing the members of their District, elected Directors become a part of a nine-member board tasked with making decisions in the best interest of all members and the cooperative business. Directors work with the management team to provide direction and general oversight of the cooperative. Directors set policies, including retail rates. To be effective, Directors must be able to read financial statements, forecasts, and strategic reports. They are to assure the democratic functioning of the cooperative in accordance with the cooperative’s Bylaws and respect the confidentiality of information provided or discussed. Directors must attend monthly meetings at the cooperative headquarters, typically on the last Tuesday of each month. They may also be called to additional meetings and training sessions.

RECORDATORIO:

Cualquier miembro que cumpla con los requisitos de los reglamentos internos y que tenga interes en ser director/a de la cooperative puede aplicar para puestos vacantes en la mesa directiva. Esto incluye miembros de grupos que son minorias, mujeres, y personas con discapacidades.

ELECTION PROCESS

Completed applications are due by 3:30 p.m. on January 4, 2023. After applications have been returned, members in each of the three Districts holding an election will be notified of those who have filed.

POST FILING DEADLINE – NOMINATION BY PETITION

After the filing application deadline has expired, persons may still be nominated by filing a petition form, also available from our office. To become a nominee by petition requires fifteen (15) members from the District to sign in support of a particular nominee on the petition form. The petition form must be submitted to the cooperative office by 3:30 p.m. on Friday, February 10, 2023.

WHEN THERE IS A SINGLE NOMINEE

Should only one nominee in a District come forward before the final deadline by petition, that applicant will be deemed elected as Director.

WHEN THERE ARE MULTIPLE NOMINEES

Should more than one nominee come forth by the petition deadline, either by direct nomination or petition, a biography of each nominee and a mail ballot will be sent to all members in the District on February 23, 2023. Returned ballots will be due on March 22, 2023.

Please return mailed ballots in the proper envelopes to the third-party ballot company and not to our cooperative. #516302 Also, allow for any possible mail delays.

DIRECTORS BEGIN TERM

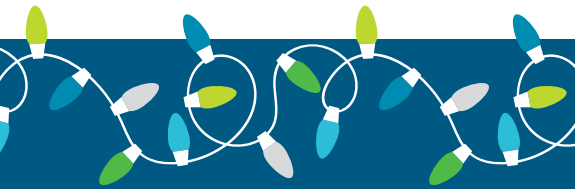
The elected Directors will be seated during the Annual Meeting on Saturday, April 22, 2023.

REBATE REMINDER



We offer rebates on the installation of a variety of equipment and appliances. Check out the REBATE tab on our website (www.fmec.coop).

While we require the rebate applications to be filed within three months of the purchase date, we urge you to turn them in as soon as possible. Current rebates are in place through December 31, 2022, or until funds are depleted. Rebates submitted within three months but after December 31, 2022, will not qualify if the rebate is no longer offered in 2023.



Recycle Holiday Light Strings

You can recycle strings of holiday lights. Just deposit them in the bin inside the front lobby entrance of FMEC. They will be given to a sheltered workshop facility where workers will reclaim usable components.

FOOD AND TOY DRIVE

Help make this holiday season brighter for those less fortunate in our communities.

Donations of non-perishable food and new, unopened toys may be dropped off at the Freeborn Mower Electric Cooperative office, by December 9th. Donations will be disbursed by the local Salvation Army.

MEMBER NEWS

ATTENTION INTERRUPTIBLE HEAT (DUAL FUEL) ACCOUNTS



The Winter Preparedness Test is scheduled for Wednesday, November 16.

This load control test is performed in advance of the winter full load control season to ensure that members are familiar with the load control sequence and that backup heating systems are functioning properly.

Control of interruptible heat will begin at 5:00 p.m. Restoration of heating loads will take place in stages beginning at 8:30 p.m. By 10:00 p.m. all loads will be fully restored.

Questions? Contact the Freeborn Mower Electric Cooperative Energy Solutions Department. #1894700

NOTICE OF RIGHTS FOR HOUSEHOLDS OF MILITARY SERVICE PERSONNEL



The Minnesota State Statute (325E.028 Utility Payment for Military Service Personnel) provides protections against a utility disconnection if a member of your household has been ordered into active military duty, for deployment, or for a permanent change in duty station during a period of active duty.

For more information or to apply for shut-off protection contact our office or go to <https://www.revisor.mn.gov/statutes/2022/cite/325E.028>

CLASSIFIED marketplace

FOR SALE

VEHICLES/MOTORIZED:

2005 TAHOE. Reliable, starts and runs great, good tires. Typical rust. 232,000 miles. \$3,500. Call (507) 391-0110.

2011 FORD E-150 VAN. \$1,500. Call (507) 402-2683.

FARM:

BUZZ SAW for front-end tractor. 50" blade. Call (507) 826-3271.

1979 INTERNATIONAL GRAIN TRUCK. Tandem, 59,450 miles, excellent shape. Call (507) 440-4525.

CORN SCREENER. 2' x 5' drum with 3 hp motor. \$50. Call (507) 438-6742.

GRASS HAY. 1,000 small square bales. No rain. \$4 ea. Call (507) 373-3891.

M FARMALL TRACTOR. Power steering, almost new tires, has been repainted. Runs well. \$1,500 OBO. Call (507) 383-0410.

HOUSEHOLD:

BEAUTIFUL SOLID OAK TABLE, 6 CHAIRS, & HUTCH with glass doors/shelves. \$1,000. Call or text (323) 388-6003.

WARDROBE/ARMOIRE. Solid wood, large. \$300 OBO. Call (507) 383-9564.

ANTIQUE OAK DRESSER, BEDSIDE TABLE, AND MIRROR. Very nice condition. \$250. Call (507) 852-3499 - leave a message.

MISC:

EARTHWISE CORDLESS ELECTRIC LAWMOWER. \$50. Call (507) 373-8858.

CHICKEN FEEDERS & WATERERS. Call (507) 219-8068.

2016 CARRY-ON STEELTRAILER. 5.5' x 10' with wood floor. \$1,500. Call (507) 383-5376.

CAMOUFLAGE COVERALLS. Full body, warm, to wear when in your deer stand. Large. \$70. Call (507) 373-8661.

EXERCISE EQUIPMENT.

Proform Cross Walk Treadmill, Lifestyle Cardio Fit Plus, and Walton Belt. All for \$125. Call (507) 438-9151.

FOLDING LUGGAGE STAND with back. Chrome with black straps, sturdy, like new. \$25. Call (507) 373-0093.

A.R.E. BRAND PICKUP TOPPER.

Contractor-style side access, top rack for log box. \$200. Call (507) 460-9745.

WERNER LADDER. Used, extension, fiberglass, 24'. \$50. Call (507) 402-7800.

CONCRETE BLOCKS.

A big pile of various sizes and colors. Call (651) 739-2715.

CRAFTSMAN SLOWBLOWER.

24" clearing with electric start. \$650. Call (507) 377-6064.

LEO 8' SNOWPLOW BLADE. Excellent condition. \$450. Call (507) 383-0802.

TREADMILL WESLO CADANCE 215 S. MODEL #WLTL49300. Like new, works great. User's manual included. \$149. Call or text (507) 383-6070.

CRAFTSMAN TABLE SAW.

10" with additional blades. \$1,000 firm. Call (507) 402-4660.

FIELD-N-FOREST INSULATED COVERALLS. XL short, 48-50 chest. Very good condition. \$25. Call (507) 402-9396.

THOMAS THE TRAIN. 9 locomotives, an Action Canyon track set, and many cars. \$90. Call (507) 373-1187.

THULE LOCKING CAR ROOF BOX CARRIER. Fits most SUVs. New \$449, selling for \$195. Call (952) 484-9929.

WANTED

ENCLOSED TRAILER. 5 x 8 or smaller. Call (507) 377-1717.

KNIVES - pocket or hunting. SWORDS. Call (507) 402-0880.

ON/OFF-ROAD MOTORCYCLE.

Used, adult size, 250-650 cc. Text (507) 402-9278.

DOG FENCING. Outdoor, moveable fencing that can stand on its own by an R.V. Call (507) 369-4980

MARKETPLACE RULES

Classified Marketplace ads are printed in our monthly **County Lines** newsletter **FREE OF CHARGE** to our current members.

You can review the Classified Marketplace Rules and/or submit an ad at www.fmec.coop. Select **MY COOPERATIVE**. Click on **NEWSLETTER** under **NEWS & INFO** tab.

You may also email ads to michelle.rayman@fmec.coop or go to the website, use the instructions above, and click on the **NEWSLETTER** tab to electronically submit an ad. Ads will not be accepted over the phone.

SPOT YOUR NUMBER

WIN A \$25 BILL CREDIT

To reward our faithful newsletter readers, we've randomly selected three (3) member account numbers in the newsletter, each two times. Hidden account numbers are spelled out numerically. (Ex: #123456)

If you spot your full account number, contact the cooperative by the 15th of the current month to claim your \$25 bill credit.

Congratulations to John Jacobs. He spotted his account number in the October newsletter.

FREEBORN MOWER ELECTRIC COOPERATIVE

PO Box 611
3366 Bridge Avenue
Albert Lea MN 56007

(507) 373-6421 or (800) 734-6421
www.fmec.coop
info@fmec.coop



Office Hours:

Monday - Friday, 7:00 a.m. - 3:30 p.m.

Board Meetings:

Typically the last Tuesday of each month.

Freeborn Mower Electric Cooperative is an equal opportunity provider and employer.



THANK YOU FOR YOUR SERVICE

HONORING ALL WHO HAVE SERVED

VETERAN'S DAY 2022

*A special thank you to our veteran employees
Allen Hendriks, John Kalis, and Nick Roling.*



LET'S COOK



LEFTOVER PIZZA BREAKFAST CASSEROLE

Submitted By: Val Buecksler

- 3 slices any kind thin crust pizza (3 C.)
- 1 C. mozzarella cheese
- 4 eggs, beaten
- 3 tbsp. butter, melted
- 1 C. milk
- 1/3 C. onion, chopped
- 1 clove garlic, minced
- 1 tsp. oregano
- 1/4 C. grated parmesan cheese

Directions:

Preheat oven to 350. Spray 9 x 13 pan. Cut pizza into 3/4" squares. Put in pan. Top w/ mozz. cheese. Whisk next 3 ingredients, pour over pizza and cheese. Sprinkle w/ remaining ingred. Cover w/ foil & bake 30 minutes. Remove foil and continue baking till eggs are set and parm is melted, 20 min.